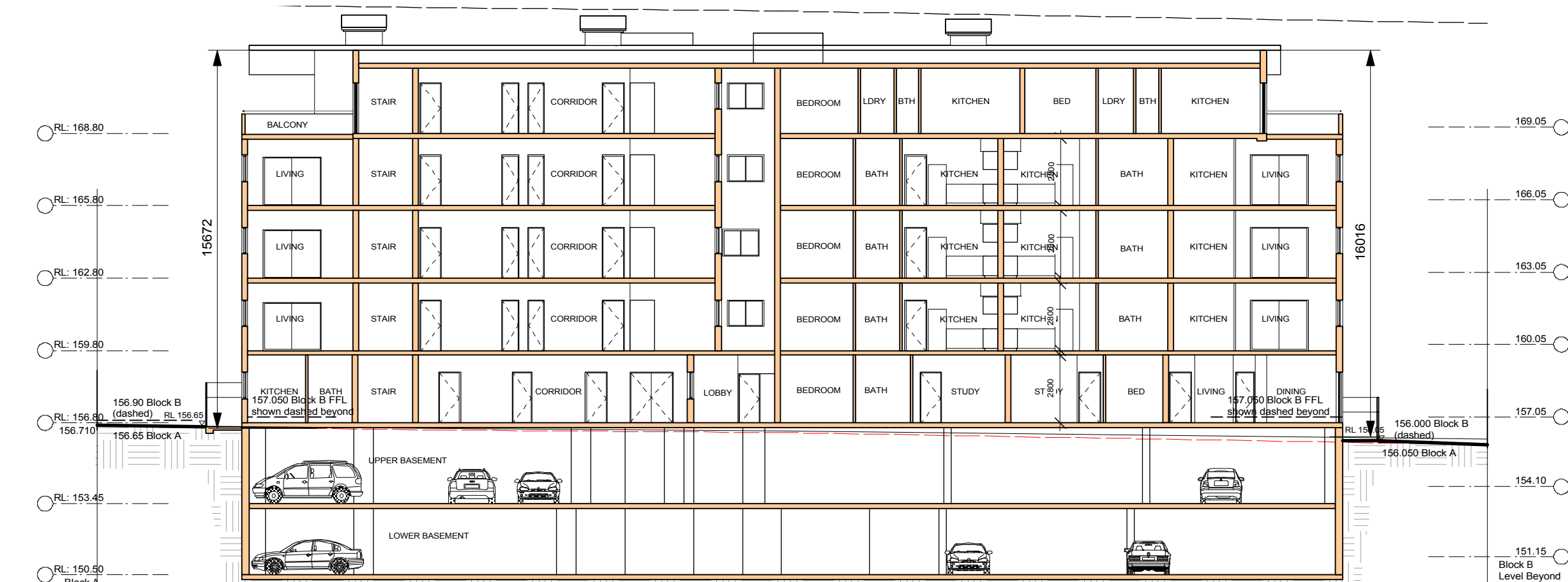
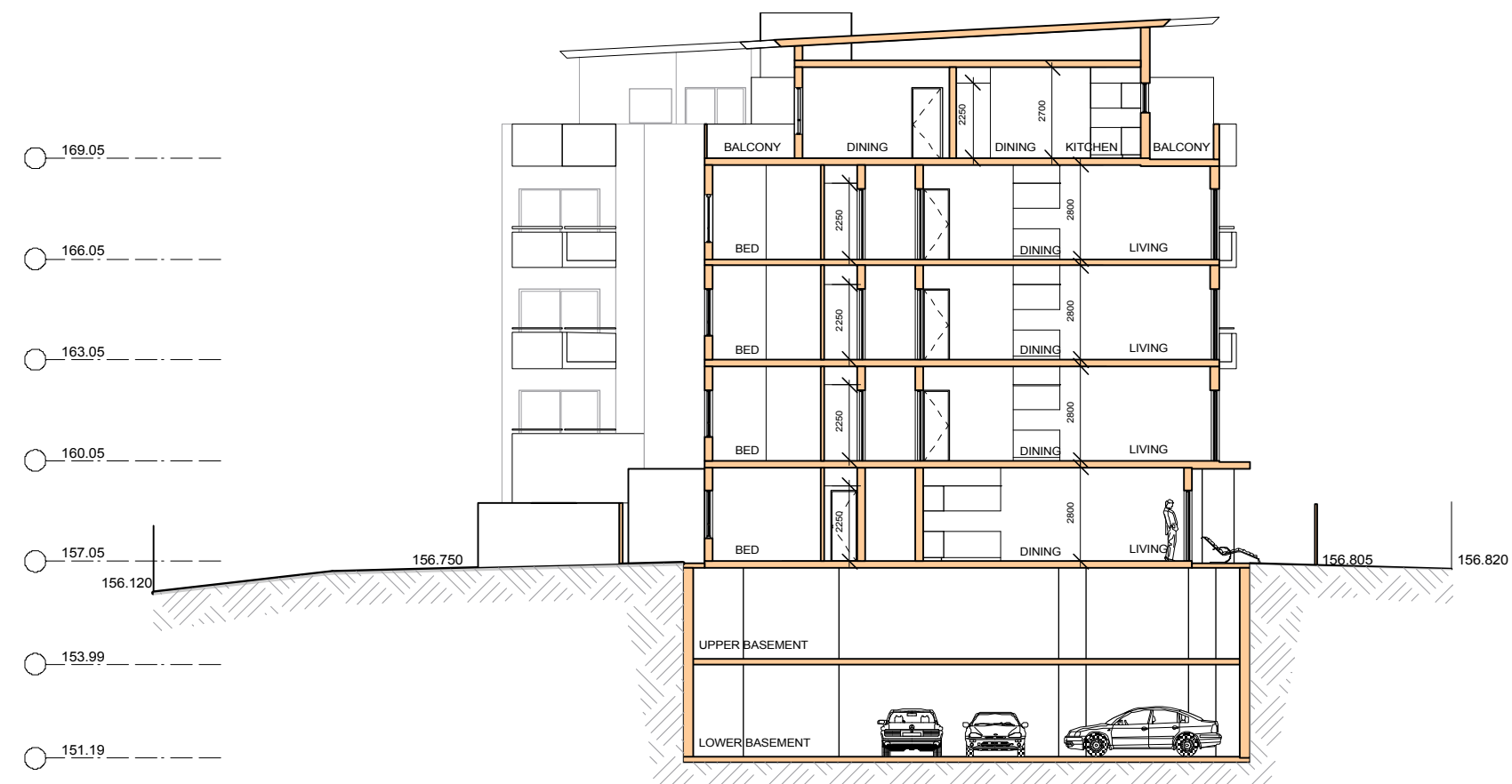
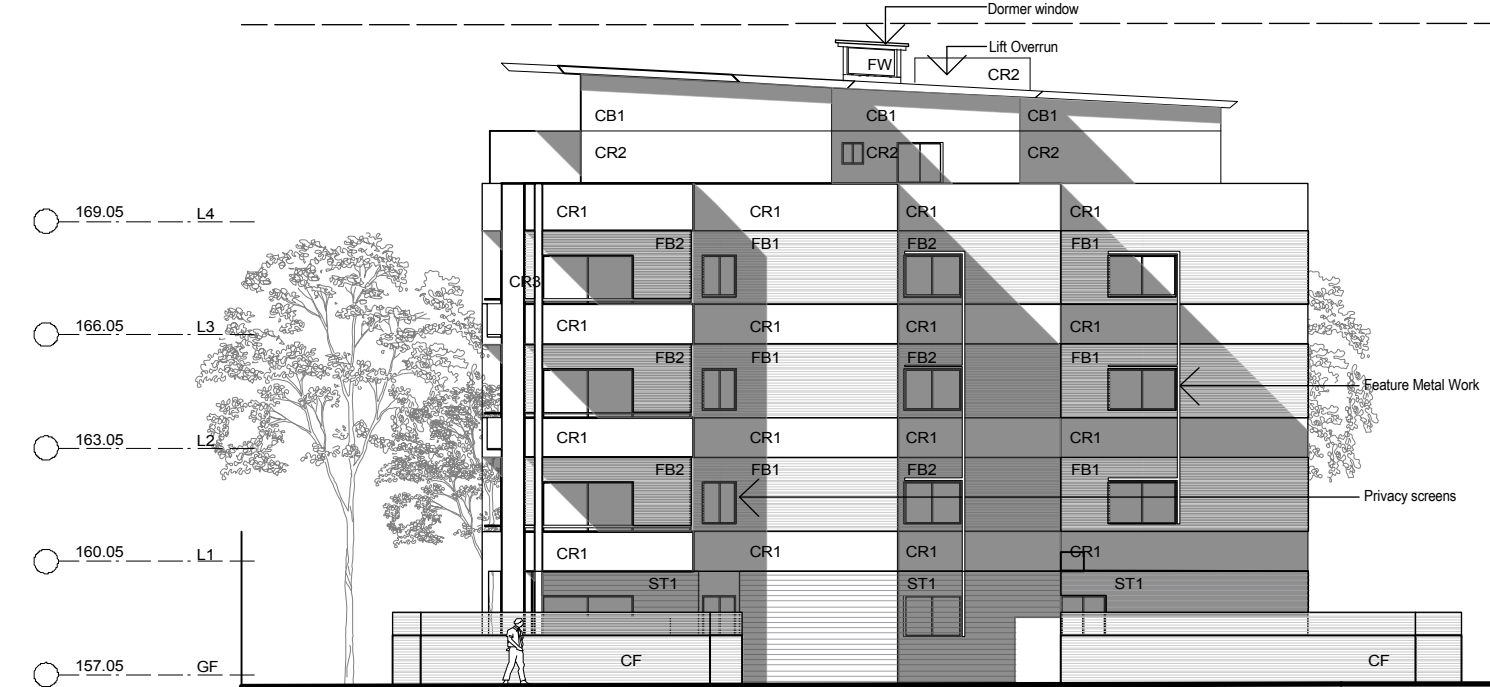


01 SECTION 1  
BLOCK A & B  
Scale: 1:200

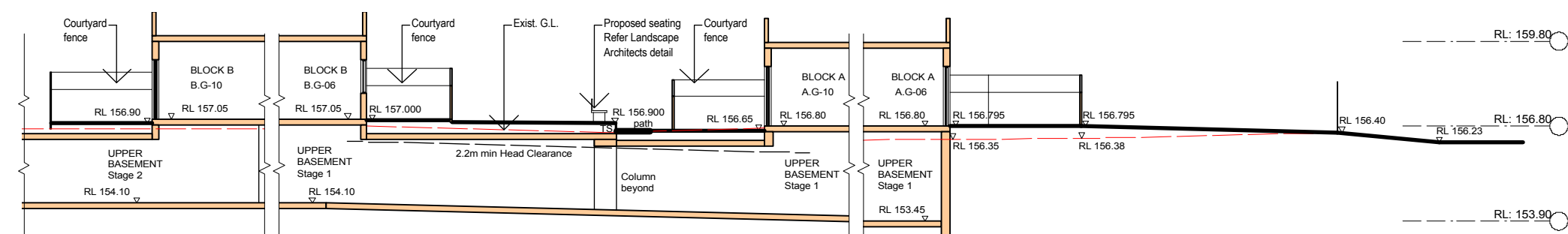
03 SECTION 3  
BLOCK C  
Scale: 1:200



02 SECTION 2  
BLOCK A & B  
Scale: 1:200



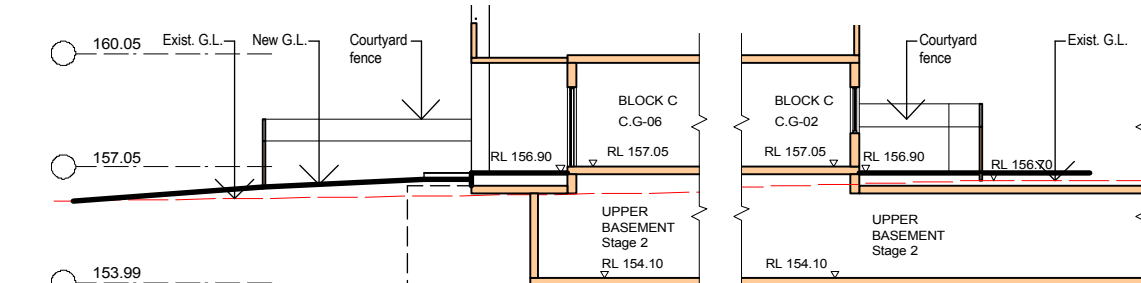
06 SOUTH ELEVATION  
BLOCK C  
Scale: 1:200



10 LANDSCAPE SECTION  
BLOCK B  
Scale: 1:200

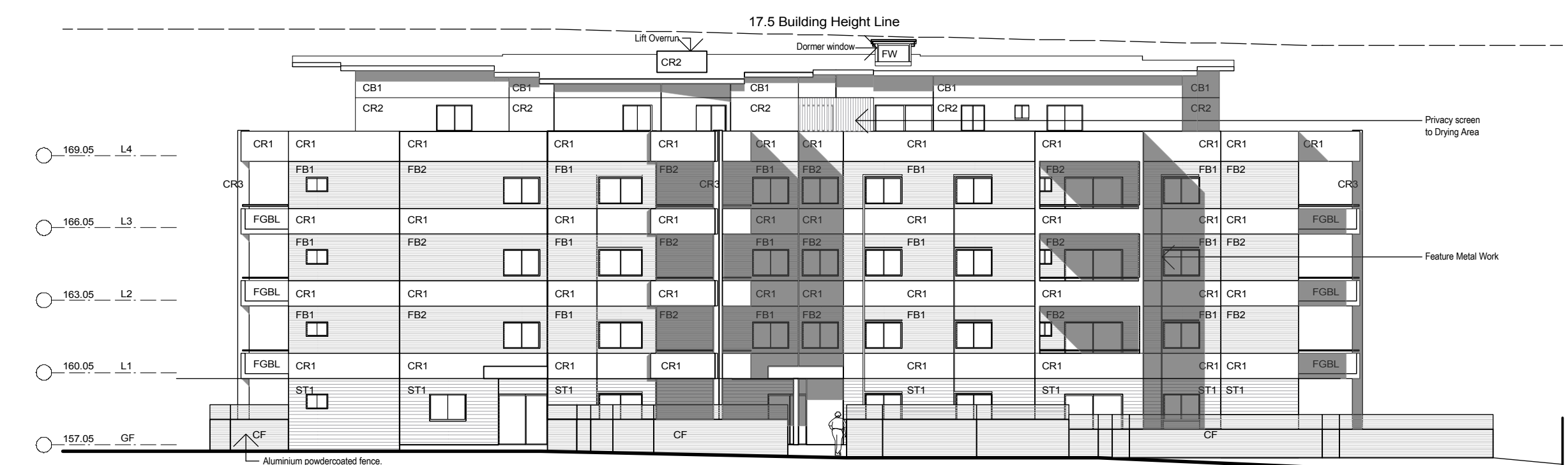
11 LANDSCAPE SECTION  
BLOCK B & A  
Scale: 1:200

12 LANDSCAPE SECTION  
BLOCK A  
Scale: 1:200

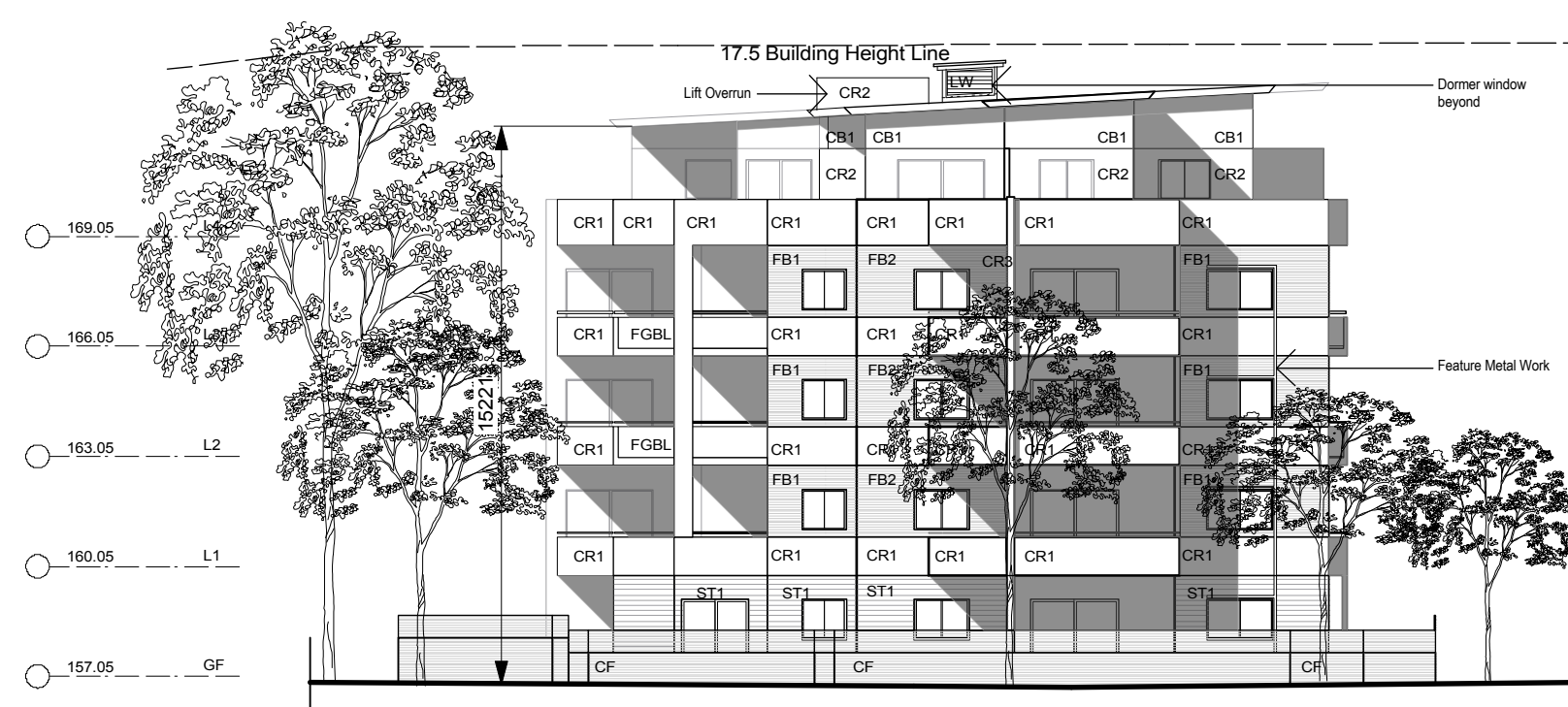


08 LANDSCAPE SECTION  
BLOCK C  
Scale: 1:200

09 LANDSCAPE SECTION  
BLOCK C  
Scale: 1:200



04 EAST ELEVATION  
BLOCK C  
Scale: 1:200



07 NORTH ELEVATION  
BLOCK C  
Scale: 1:200

FINISHES LEGEND			
	Wall Face (CR1) Dulux 'Jodhpuri'		Wall Face (CB1) Colorbond 'Paperbark'
	Wall Face (CR2) Dulux 'Ploughed Earth'		Wall Face (CB2) Colorbond 'Surfmat'
	Wall Face (CR3) Dulux 'Wayward Grey'		Window & Door Frames Pergolas, Louvers & Feature Metal Work (PC1) Powdercoat 'Shale Grey'
	Soffits Dulux 'Antique White U.S.A.'		Court Yard Fences (CF) Powdercoat 'Jasper'
			Face Brick (FB1) Boral Salmon Pink 'Smooth Face'
			Face Brick (FB2) Boral Jule 'Smooth Face'
			Stone (ST1) Boral Designer Block Charcoal 'Split Face'
			FGLB Aluminum Framed obscure Glass Balustrade
			LW Louvre Window
			FW Fixed Window

P	6/6/11	Amended DA Submission	JM
O	13/5/11	Amended DA Submission	JM
N	5/6/11	Amended DA Submission	JM
M	20/4/11	Block C Elevations Amended	JM
L	19/4/11	Preliminary Issue	JM
K	22/12/10	Issued for DA	JM
J	22/12/10	Issued for DA	JM
I	29/9/10	For Pre Development Application 2	JM
H	16/9/10	For consultant co-ordination	JM
G	13/9/10	For consultant co-ordination	JM
F	11/8/10	For Pre Development Application (Block A,B & C Modified for Solar Access)	JM
E	22/7/10	For Pre Development Application	JM
D	16/7/10	Consultant Issue	JM
C	2/7/10	Drawing amended to include Site Sections	JM
B	1/7/10	Section Amended	JM
A	29/6/10	For Client Review & Consultant Issue	JM
rev	date	revision notes	by

Figured dimensions to be taken in preference to scaling. Contractor to verify all dimensions on job before commencing any work or making shop drawings

Copyright remains the property of Playoust Churcher Architects. Reproduction of the whole or part of this document constitutes an infringement of copyright. The information, ideas and concepts contained in this document are confidential

project # 06-507

Rosedale St Ives  
212-216 Mona Vale Road &  
5A & 13 Memorial Ave St Ives

client  
Village Building Company

dwg  
Site Sections &  
Elevations Block C  
printed 6/6/2011 drawn KB ckd scale@A1 1:200

DEVELOPMENT APPLICATION  
stage drawing # revision  
DA 201 P  
11 marian street  
killara new 2071  
T 02 9468 5811  
F 02 9468 4970  
info@playoustchurcher.com.au  
www.playoustchurcher.com.au  
PLAYOUST CHURCHER ARCHITECTS  
John J Playoust & Co Pty Limited ACN 008 503 188 & Brett Churcher Architects Pty Ltd  
ACN 003 751 611 trading as Playoust Churcher Architects